

WEBINAR

Employee Safety Device Mandates

A Guide for Hotels



Agenda

- Introduction
- ESD/Panic Button Brief & Compliance
- Implementing a Solution
- Questions and answers

Speaking today



Tim Rogers

Business Development
Executive

Panic Button Brief

AHLA 5-Star Promise

Provide U.S. hotel employees with employee safety devices to help them feel safe on the job.



State/Local Legislation

Passed State

- Illinois
- New Jersey
- Washington

Pending State

- Massachusetts
- Pennsylvania
- Georgia

Passed Local

- **Los Angeles, CA**
- Santa Monica, CA
- Long Beach, CA
- Oakland, CA
- Sacramento, CA
- Miami Beach, FL
- Chicago, IL
- Seattle, WA

Relay meets and exceeds common needs of Associate Alert Devices for hotel brands

Device Needs	Relay Delivers	Relay Extra Benefits
Reliable geolocation capability with the ability to locate associates to room-level accuracy	Relay Bluetooth beacons deliver 5-meter accuracy, flexibly paired with room or location-specific assignments via Relay Dashboard	Geolocation updated in real time via 3D mapping
System coverage in all guest rooms, public restrooms, areas where one would be alone with guest	Relay beacons are flexibly deployed to support any size property with granularity	Self-deployed geolocation system allows for new beacons/locations to be added at any time
Simple to activate; protects against false alarms	Extensive testing, industry best practices, 5x-press rapid trigger	Responsive software updates deployed to mirror associate trigger behavior
Help can be immediately dispatched to incident	Pre-selected group immediately notified via device, phone (app) and/or computer	Respondents can immediately talk to coordinate response with/without associate
Employee training and testing at regular cadence	Robust training program and documentation provided at launch	Dedicated Customer Success Manager proactively managing account/available for on-demand training



In 1,400+ properties across all flags

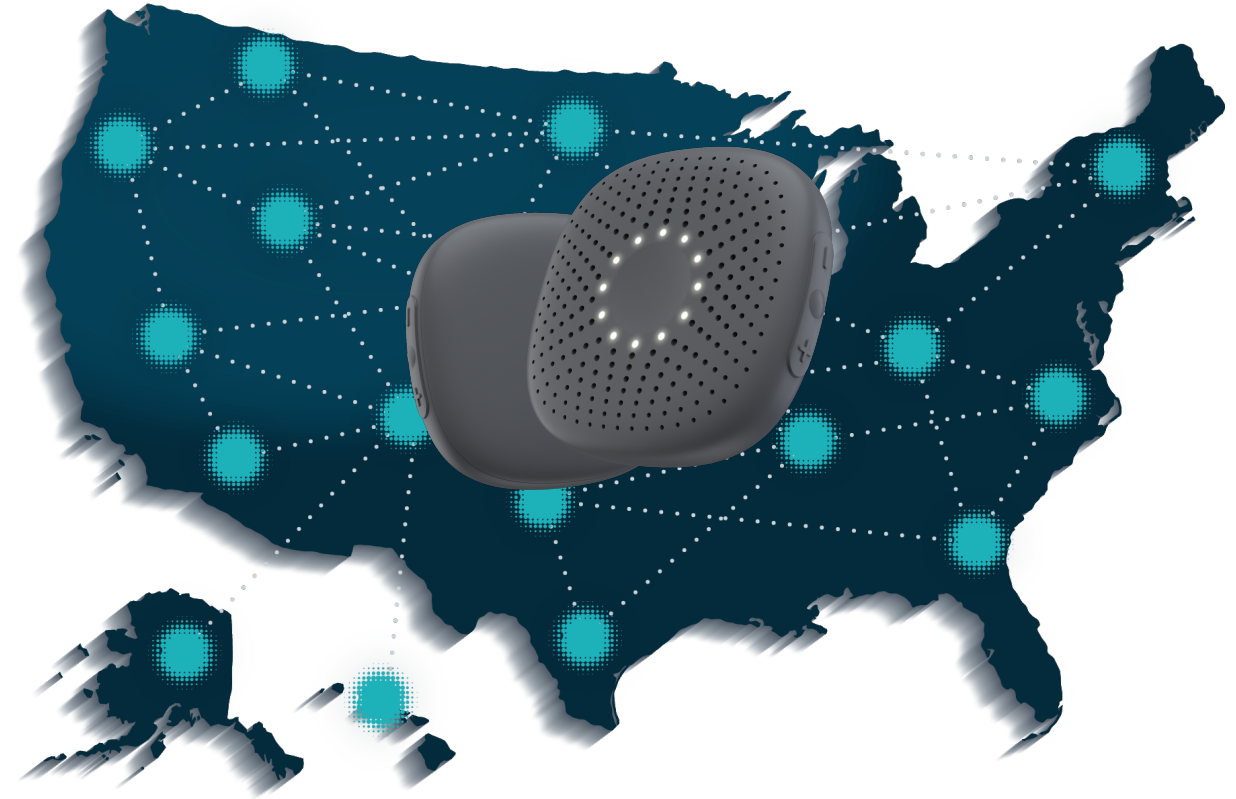
Leading organizations beyond hospitality are also deploying Relay

 **William "Chip" Rogers** • 2nd
President & CEO at American Hotel & Lodging Association
6d •  [+ Follow](#)

Thank you Atrium Hospitality for your leadership in fulfilling the [American Hotel & Lodging Association 5 Star Promise](#). [Relay](#) is a wonderful company providing technology solutions to help protect and support hotel employees.



Atrium Hospitality Selects Relay to Enhance the Safety of Hotel Employees Across 80 Properties
hoteltechnologynews.com • 2 min read



Relay's Differentiation: What sets us apart from the competition

Connectivity

Differentiated hardware and software that seamlessly leverages multiple carriers.

IoT

Beyond AAD, Relay's network architecture can readily extend to IoT at very low cost.

Deployment Simplicity

Relay's inversion of the tech stack - putting sophisticated technology in the Relay+ device vs. the beacon enables a very simple beacon installation that requires no network connection, no in-building power source and no technical expertise to deploy.

Associate Familiarity

Relay's being leveraged for communication instill a deep familiarity with the product and there is a functional necessity to be always wearing.

Multi-purpose Functionality

Provide operational value to the staff using Relay in the forms of communications, language translation and guest facing configuration.

Response Coordination

No need to leverage other solutions to coordinate a response to AAD incidents. With Relay, all responders are immediately pulled into a group channel resulting in optimal response time and emergency response coordination

Open API Integrations

Relay was designed with an open API to support system integrations and custom behaviors. This can support work order dispatch and ticket resolution guest-facing technologies and other systems that can benefit from the immediacy of routing information and requests to and from employees.

Cost-efficiency

Relay has a unique capability to drive long-term cost savings by combining two critical line items into one: AAD and Communications for frontline workers

Implementing a Solution



Relay is the fastest-growing Employee Safety Device in hospitality

Brand Satisfaction

- Relay satisfies brand ESD requirements
- Can replace outdated two-way radios

Owner Appeal

- Relay could save an average 200 room property up to \$35K over 3 years

In 1,400+ properties across all flags

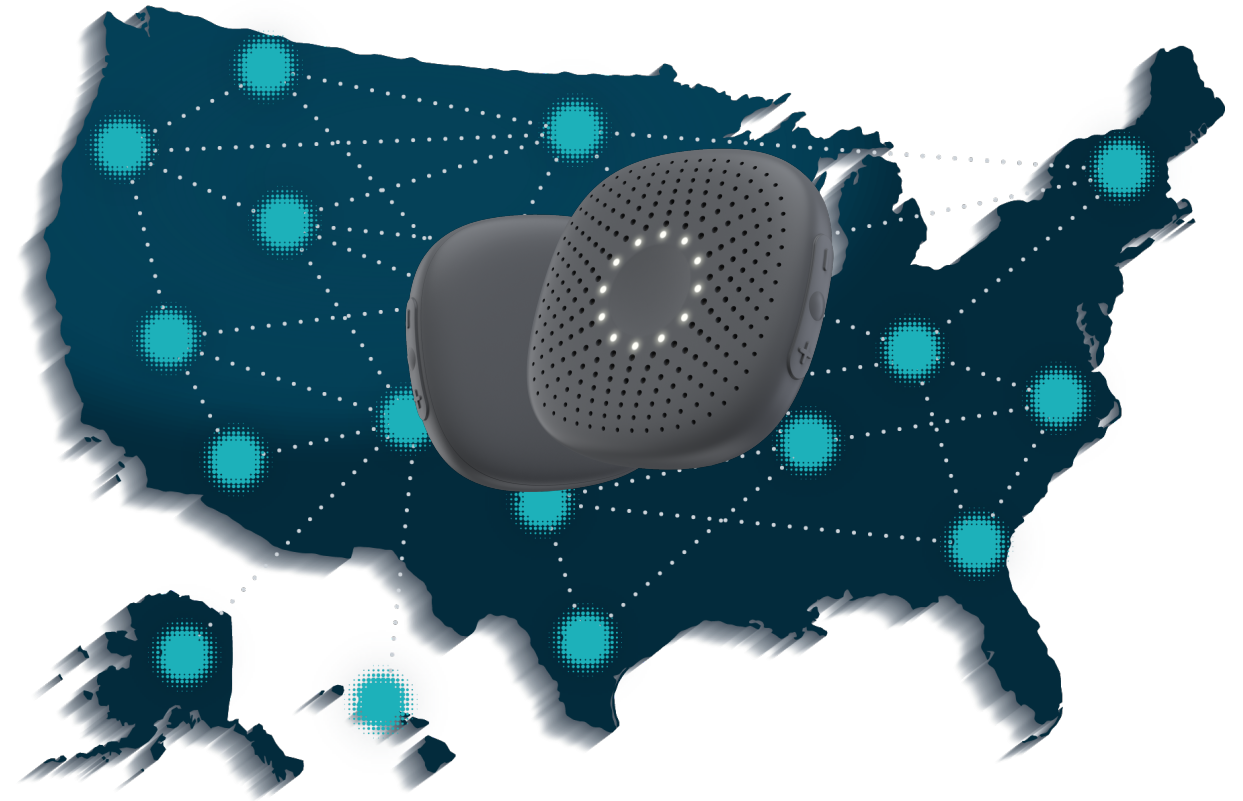
Leading organizations beyond hospitality are also deploying Relay

 **William "Chip" Rogers** • 2nd
President & CEO at American Hotel & Lodging Association
6d •  [+ Follow](#)

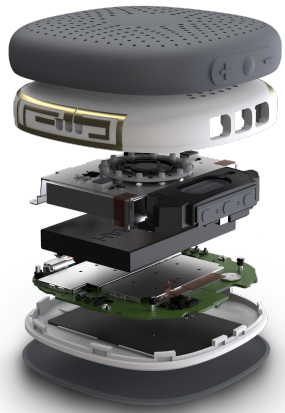
Thank you Atrium Hospitality for your leadership in fulfilling the [American Hotel & Lodging Association 5 Star Promise](#). [Relay](#) is a wonderful company providing technology solutions to help protect and support hotel employees.



Atrium Hospitality Selects Relay to Enhance the Safety of Hotel Employees Across 80 Properties
[hoteltechnologynews.com](#) • 2 min read



Highly adaptive voice-first technology with brand-compliant employee safety functionality built in



The power and intelligence of a smartphone

in a simpler, more durable and affordable form factor

with nationwide coverage and seamless WiFi integration

powered by a flexible software platform



Empower your employees

Relay will allow your team to stay safe and connected



Communication

- Nationwide 4G LTE + WiFi Range
- Ultra-durable
- Simple UX
- Easy to wear
- Mobile & Software Compatible



Employee Safety

- Brand compliant
- Self-deployed
- Redundant connectivity
- Instant response communication
- In stock and ready to ship

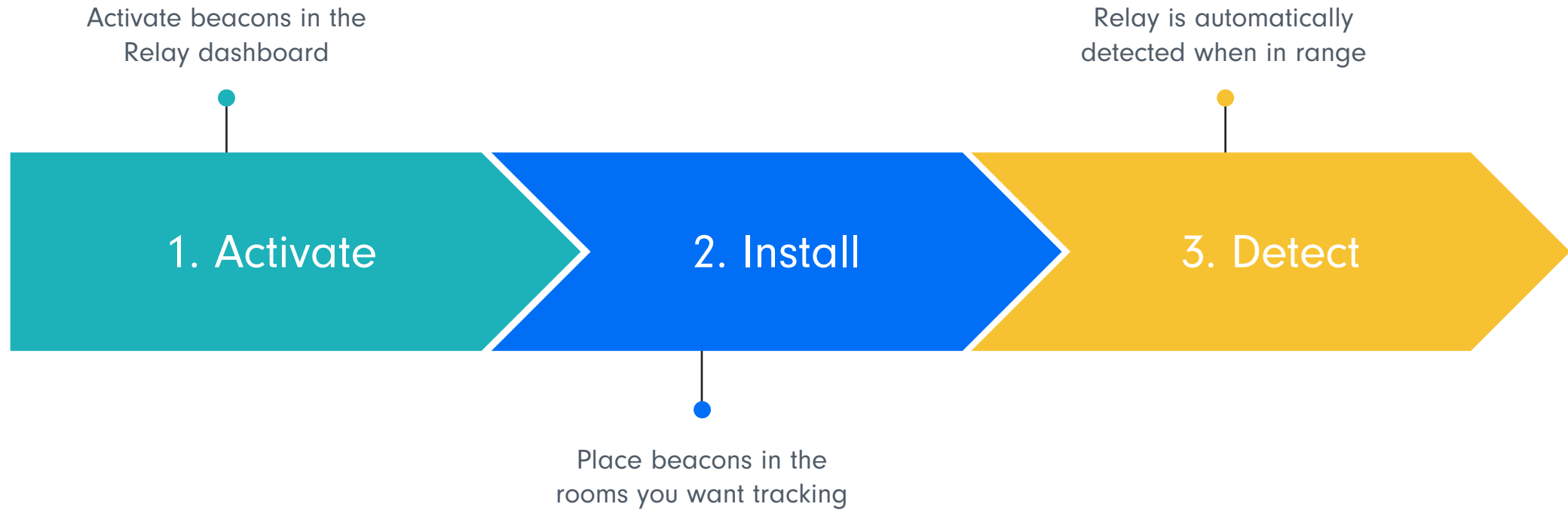


Enhanced Capabilities

- Language translation
- Productivity & Asset Tracking



Install your system in three steps



✘ No service appointments or wiring required



How it works



Rapid press the talk button at least 5 times



The beacon that is closest to the Relay will report its location to designated responders



Location will continue to update throughout an alert

“

By collaborating with Relay, we enhance the safety of our teams while [improving] our commitment to exceptional guest experiences.

”

Questions?



Thank you

Tim Rogers,
Business Development Executive
trogers@relaypro.com
984-221-8183